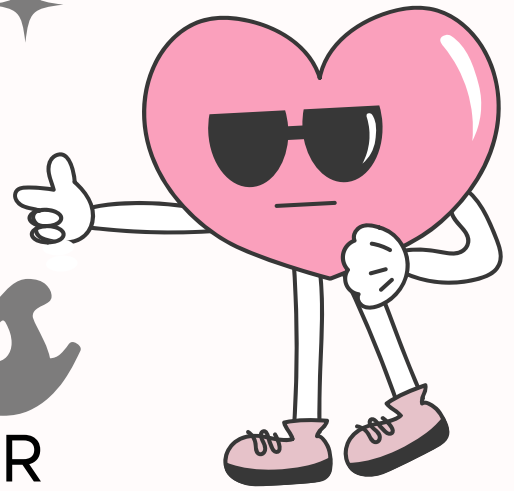


B1 Class

NEWSLETTER



Over the past two weeks, we have explored different topics and learned about the meaning of Setsubun, as well as why February is known as the month of love. Regardless of these celebrations, the children have been freely expressing their love and appreciation for their friends and teachers—especially me! 🥰❤️

This Valentine's season, let us continue to spread kindness, love, and joy to everyone around us.



Thank you,
Ms. Kristil



Hayama International School B Bldg

kristil@hayama-international.co.jp



B1 Class Newsletter

Themes

- Love & Friendship, Valentine's Day
- Bean Throwing Day
- Literacy: Z
- Numeracy:10

Dates to Remember

- February 11 → National Foundation Day (No School)
- February 13 → Valentine's Day
- February 16 → Evacuation Drill
- February 19 → Body Measurement
- February 20 → Teacher's Preparation Day (No School)

Upcoming Theme

- Healthy Habits
- Literacy: Review A-Z
- Numeracy:10

B1 CLASS



B1 CLASS



B1 CLASS



B1 CLASS



SETSUBUN



福

